



Cleaning



- You can just rinse off pollen, sand, and dust with some water (from a hose or watering can).
- For stubborn dirt, use a lint-free cloth or a soft sponge with plenty of water and a light touch.
- To get rid of really tough grime, use warm water and a bit of regular dish soap.



Stuff you should avoid:

- Don't rub your SunForm dry.
- Don't use any abrasive cleaners.
- Glass cleaners, solvents, and alcohol can damage the surface.
- Don't use a pressure washer.

More info

... can be downloaded from the service area of the SunForm shop

(www.sunform.shop/service/).

- Setup & Positioning
- Cleaning & Care
- Tips & Tricks

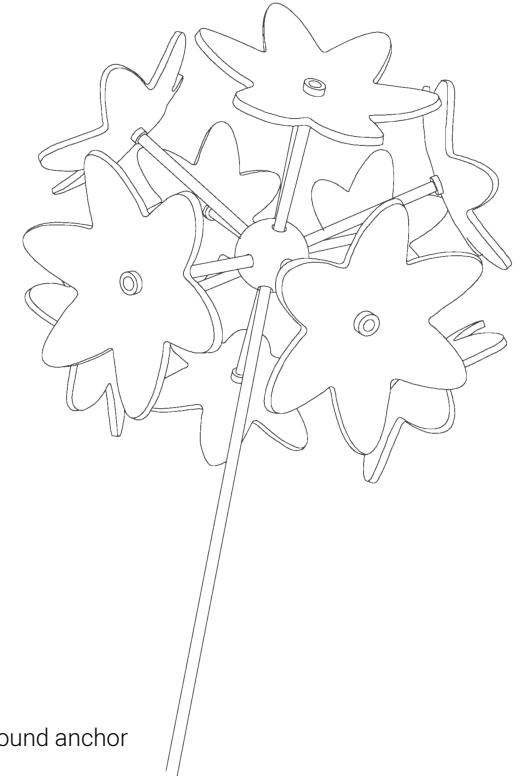
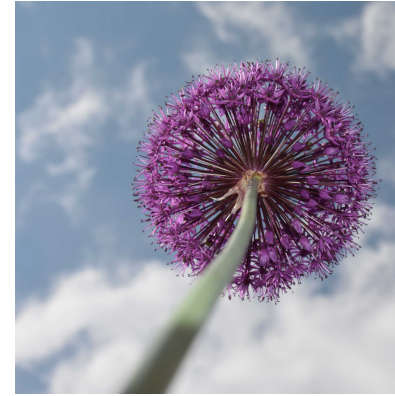
Safety warnings



SunForms aren't toys and aren't suitable for kids under 3.
The mounting kit might contain small parts - **choking hazard**.

If you use brute force (like bending it too much or hitting it hard), the plastic discs might break or splinter. Broken edges can be sharp or pointy and might cause cuts or stabs if you're not careful.

In that case, please wear proper gear (like safety goggles and gloves).



Content

- What's in the box
- General tips
- Assembly guide
- Setting it up / Ground anchor
- Cleaning
- More info
- Safety warnings

What's in the box


- 11x flower and stem
- 1x leaf
- 1x Flexible fiberglass swing rod and ground anchor
- 1x Assembly guide
- 1x Mounting kit with bud

General tips

- SunForms are generally winter-proof and can handle temperatures up to 75 °C.
- The discs come wrapped in protective film. For quality checks or with frosted, engraved, or coated discs (MultiColor), the film is removed during production.
- **To keep the film from tearing on delicate engravings or thin edges, please peel it off nice and slow.**
- The discs are heated up to be bent into shape. This can cause some bubbles to form under the protective film. Don't worry, though—those bubbles disappear when you peel off the film and don't affect the quality of the discs at all.

Assembly Guide

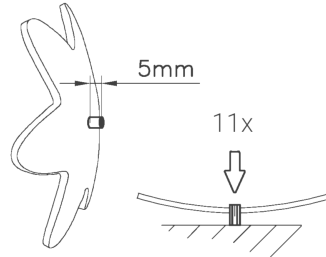
To put your SunForm together, you'll need:

 a damp cloth.

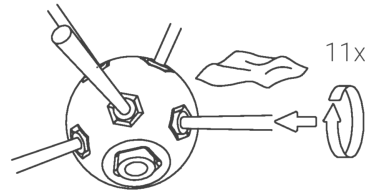
1. Keep the protective films on the discs for now. Twist or push the small, long clips into the 11 small holes until they stop - then put the big clip into the large hole on the bud.



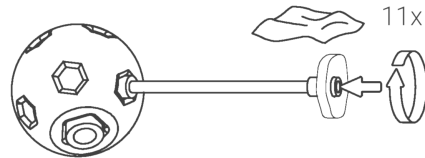
2. Now, twist or slide the remaining 11 small, long clips into the flowers (starting from the side that curves outward). To do this, place the clip on a solid surface and slide the flower over it using circular movements until it sticks out about 5 mm at the bottom and 2 mm at the top.



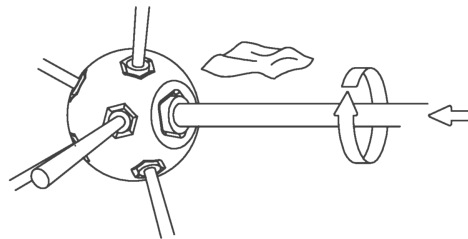
3. Give the 11 short rods a little moisture and push them all the way into the small clips on the bud.



4. Now, gently peel the protective film off the flowers. Dampen the end of each rod and twist or push the flower (with the clip) so it's flush with the rod. Make sure to push on the clip itself, not the flower. Just repeat this for all the rods and flowers.

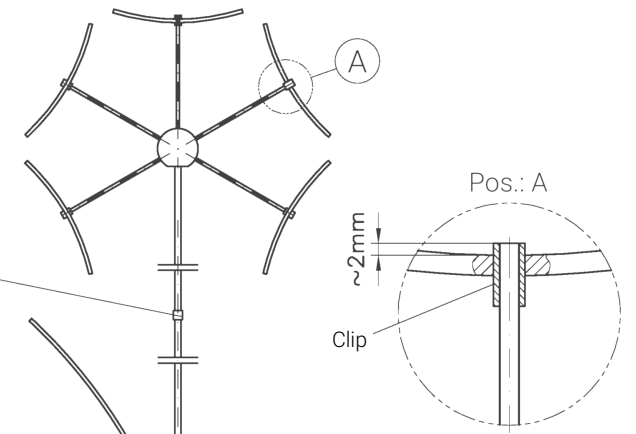


5. Next, dampen the swaying rod and slide or twist it as far as it goes into the large clip at the bottom of the bud.



As long as the rod is still wet, you can easily adjust the discs by sliding or twisting them. After a few days, any moisture between the rod and the clips will have dried up. This is when the discs will be firmly locked into their final position.

You can slide the included clamping clip onto the rod; it's there to help hold the ribbon in place if you need it.



Gently bend the leaf and slide it over the rod. Since it rests right on the ground anchor, you won't need an extra clip to hold it.

Setting it up

Usually, suncatchers love the shade – but the Allium is definitely a "sun plant." While it looks brighter in the shade (especially against dark backgrounds), its color gets way more intense the more daylight it gets. Just keep in mind that at night or under artificial light, the Allium will look clear and colorless.

Ground Anchor

The Allium is a pretty big and heavy SunForm, and its center of gravity is way up at the top. Because of that, the ground anchor is a must-have part of the basic setup.

First, take the transparent sleeve and slide it about 25 cm onto the rod. Now, you can just step the ground anchor into the soil (try to avoid hitting it hard, so it doesn't break). Poke the rod through the hole of the anchor about 20 cm deep into the ground, and then slide the sleeve all the way down into the anchor's hole.

